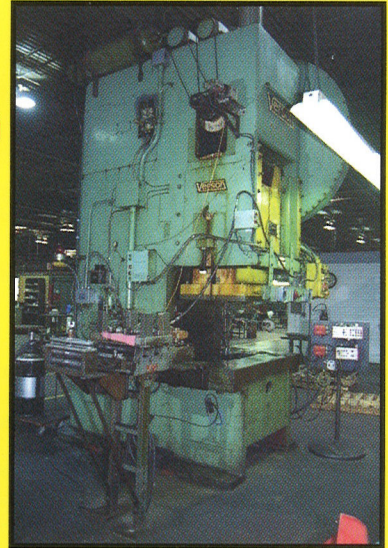
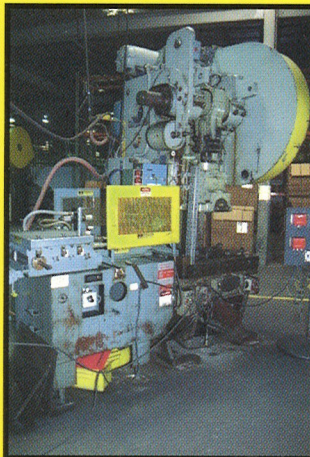


Auction
on the premises



**BATES
MANUFACTURING
COMPANY**

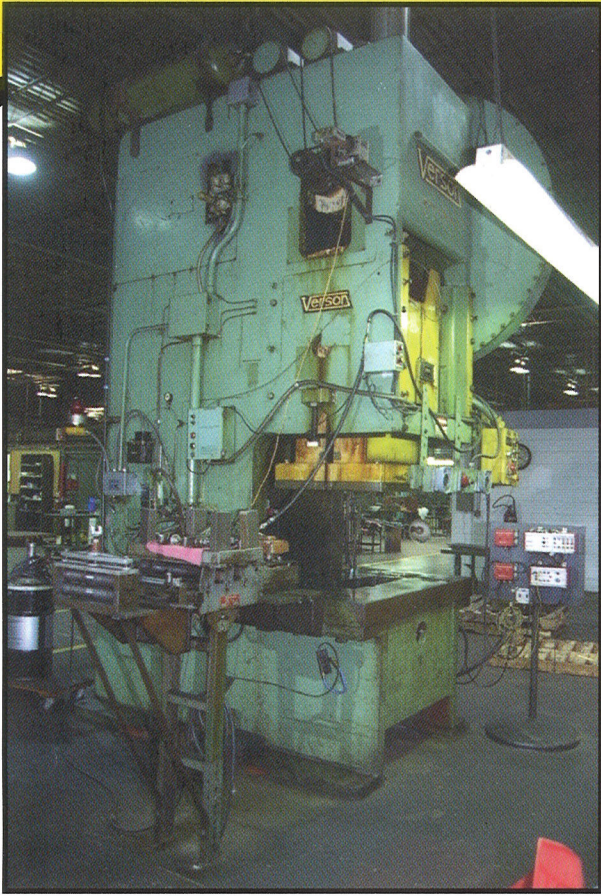
**36 NEWBURGH ROAD
HACKETTSTOWN
NEW JERSEY**



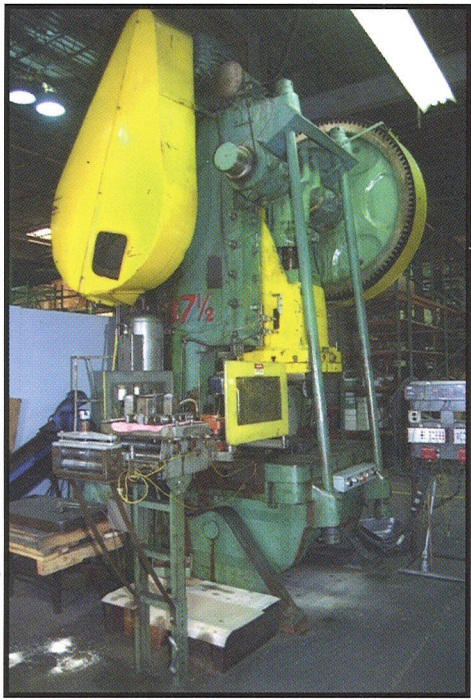
**THURSDAY
AUGUST
11th**

Starting at 10 AM

15 GAP & OBI PRESSES & PRESS ACCESSORIES



VERSON 200 TON GAP FRAME PRESS



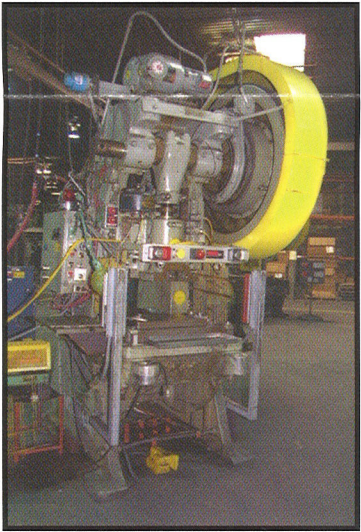
FERRACUTTE 200 TON BACK GEAR OBI



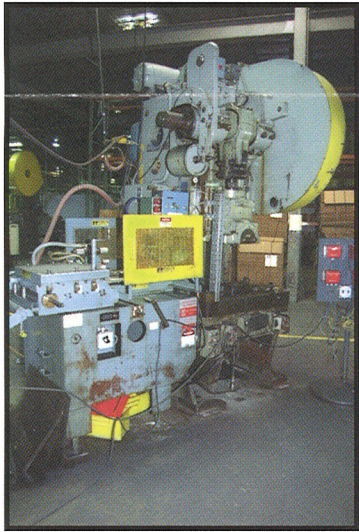
CLEARING 60 TON OBI



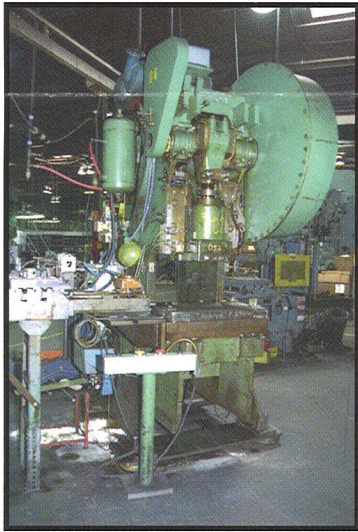
CLEARING 60 TON OBI



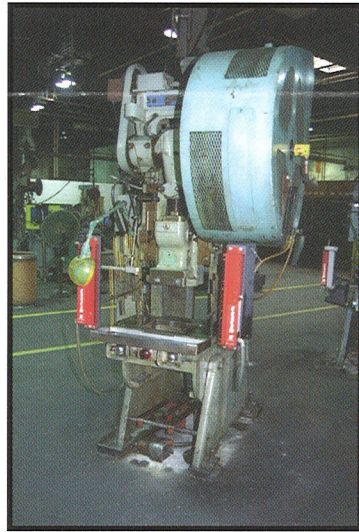
THOMAS 75 TON OBI PRESS



NIAGARA 90 TON OBI PRESS



VERSON 90 TON OBI PRESS



WARCO 40 TON OBI PRESS



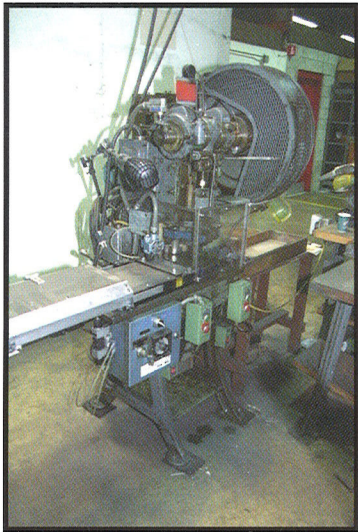
BLISS OBI PRESS



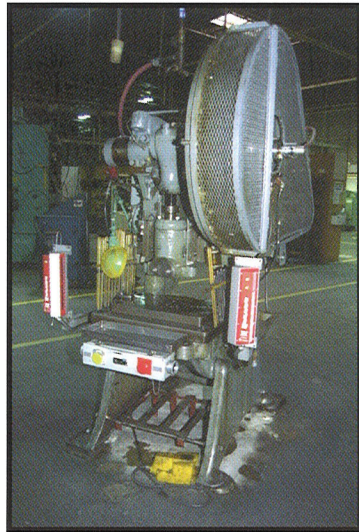
BLISS 60 TON OBI PRESS



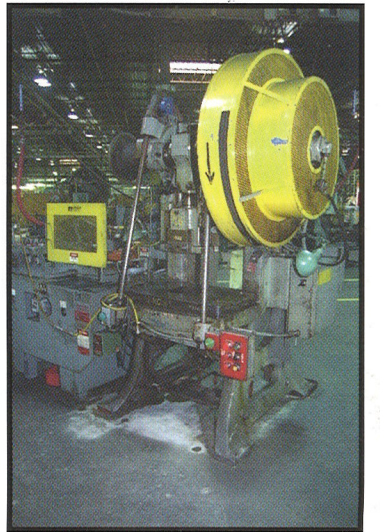
Z & H OBI PRESS



L & J NO. 1 OBI PRESS

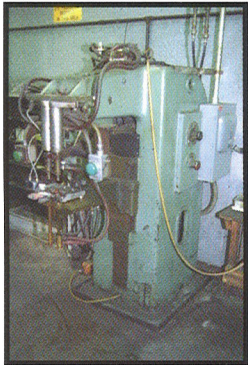


Z & H OBI PRESS



V & O 50 TON OBI PRESS

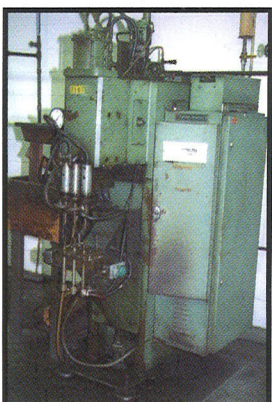
SPOT & ROTARY WELDERS



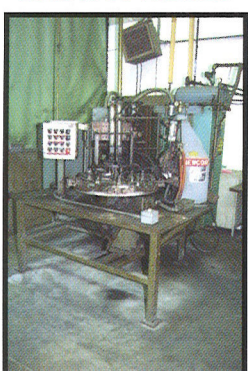
LORS SPOT WELDER



TAYLOR WINFIELD



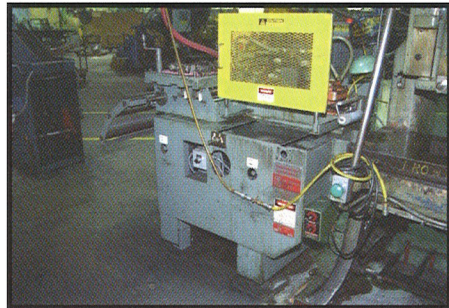
TAYLOR WINFIELD 75 KVA



NEWCOR ROTARY



SCIAKY 50 KVA



1 OF 4 - AIR FEEDS 12" x 12" PNEU. FEEDS



1 OF 5 - COOPER WEYMOUTH COIL CRADLES



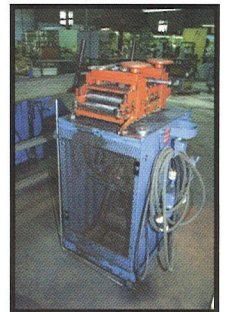
STRAIGHTENER



CRADLE



CRADLE



STRAIGHTENER

STEPHEN L. Winternitz, Inc.
 Industrial Auctioneers • Appraisers
 235 ANTHONY TRAIL
 NORTHBROOK, IL 60062
 Phone (708) 272-0440 • Fax (708) 272-0604
 Branch Office In Dallas, Texas
 Since 1894
 Four Generations of Service to Industry
 ★ Celebrating our 100th Year! ★

KEMPLER INDUSTRIES

BROACHES



MILES 10 TON MODEL MB0010-36-120 BROACH



LAPOINTE 2.5 TON TYPE HP-5 BROACH

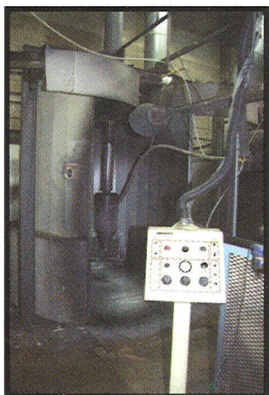
FINISHING SYSTEM



MBC 22" x 72" 5-STAGE PARTS WASHER



MBC GAS FIRED OVEN



RANSBURG SPRAYER



SPRAY BOOTH

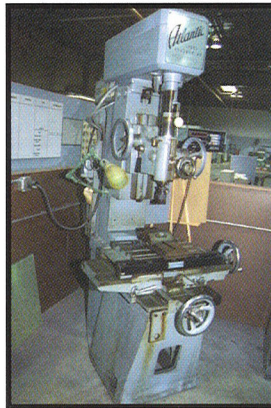
INSPECTION

The Day Before The Sale
9 AM to 4PM
and Morning of Sale

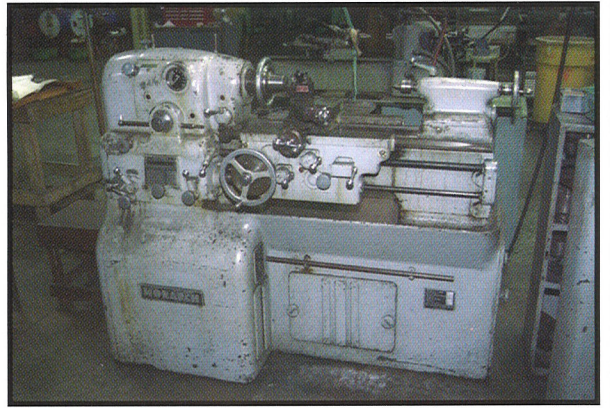
METALWORKING EQUIPMENT



BROWN & SHARPE



ATLANTIC JIG BORER



MONARCH 10" x 20" 10EE LATHE



DOALL GRINDER



DOALL BANDSAW



ENCO 2ND OPERATION LATHE



G & L 8" x 24" GRINDER



CLAUSING DRILL



CINCINNATI MILL



CINCINNATI MILL



HARIG GRINDER



SNOW TAPPER



SPEEDY-CUT TAPPER



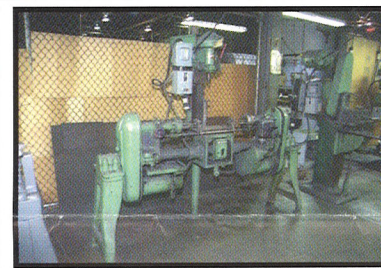
ORBITAL SPINNER



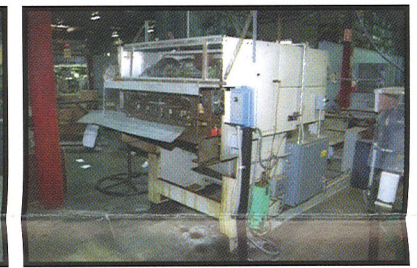
RIVETER



DRILL



3-HEAD DRILL



DOUBLE END NOTCHER

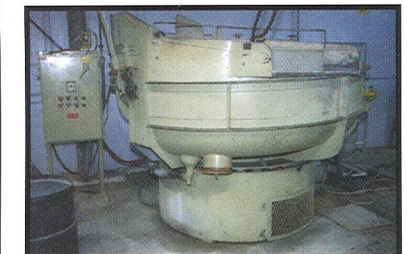
MISCELLANEOUS MACHINERY



CHEMCUT 547 ETCH LINE



DEGREASING TANKS



ROTO-FINISH FINISHING MILL



NUARC CAMERA



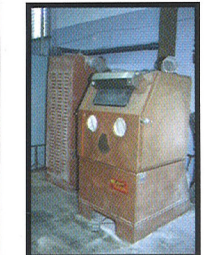
COMPARATOR



TESTER



TESTER



BLAST UNIT

A Buyers Premium of 10 % Will Apply To All Purchases At This Sale

Auction
on the premises

BATES
MANUFACTURING COMPANY
36 NEWBURGH ROAD
HACKETTSTOWN, NEW JERSEY

Thursday
AUGUST 11th
Starting at 10 AM

DIRECTIONS

HACKETTSTOWN IS LOCATED APPROX. 1 HOUR WEST AND NORTH OF NEWARK JUST SOUTH OF I-80 ON ROUTES 517 & 46.

FROM NEWARK AIRPORT GO NORTH TO I-280 WEST. THIS WILL FEED INTO I-80 WEST AND EXIT AT NO. 26 ONTO ROUTE 46 WEST. FOLLOW ROUTE 46 WEST FOR APPROX. 7 MILES (Down a Mountain) TO FIRST TRAFFIC LIGHT (East Avenue). TURN LEFT AND FOLLOW TO END OF STREET AND AT THAT TRAFFIC LIGHT TURN LEFT ONTO MOUNTAIN AVENUE. GO STRAIGHT THROUGH 2 TRAFFIC LIGHTS, OVER SMALL BRIDGE AND GO APPROX. 1 MILE TO FIRST RIGHT TURN (Newburgh Road) TO SECOND BUILDING ON RIGHT SIDE.

IF COMING FROM WEST - I-80 EXIT NO. 19 AND GO SOUTH ON ROUTE 517 THRU HACKETTSTOWN ONTO MOUNTAIN AVE AND FOLLOW ABOVE DIRECTIONS.

INSPECTION

The Day Before The Sale 9 AM to 4PM
and Morning of Sale

PRESSES

VERSON 200 TON MODEL 2000BG OPEN BACK GAP FRAME PRESS; S/N 21927: 10" Stroke; 24" Shut Height; 34" x 58" Bed; 35 SPM; Air Clutch
FERRACUTE 200 TON MODEL CC-37 1/2 BACK GEARED OBI PRESS; S/N 23947: 8" Stroke; 23" Shut Height; 30 SPM; 34" x 58" x 4 1/2" Thick T-Slotted Bolster Plate; 22" x 24" Ram; Air Clutch
NIAGARA 90 TON MODEL M-90 OBI PRESS; S/N 42596: 4 1/2" Stroke; 17 1/2" Shut Height; 60 To 120 SPM; 25" x 39" Bed; Variable Speed Drive; Air Clutch
VERSON 90 TON NO. 7-S OBI PRESS; S/N 13208: 6" Stroke; 15" Shut Height; 21" x 34" Bed; 45 SPM; Variable Speed Drive; Air Clutch
THOMAS 75 TON OBI PRESS; S/N N/A: Variable Speed Drive; Air Clutch

2 - CLEARING 60 TON MODEL TORC-PAC OBI PRESSES; S/N's 57-8526 & 57-8525: 4" Stroke; 13 1/2" Shut Height; 90 SPM; 20" x 32" Bed; Air Clutch
BLISS 60 TON OBI PRESS; S/N H-61254: 2 1/2" Stroke; 15" Shut Height; 20" x 32" Bed; Air Clutch
BLISS 60 TON (Approx.) OBI PRESS; S/N H37812: Air Clutch

V & O 50 TON MODEL 50S OBI PRESS; S/N 50S-1088: 3" Stroke; Variable Speed Drive; Air Clutch
WARCO 40 TON OBI PRESS; S/N 55-P-337-1: 3" Stroke; 10" Shut Height; 100 To 200 SPM; Variable Speed Drive; Air Clutch
Z & H 45 TON (Approx.) OBI PRESS; S/N N/A: Air Clutch
Z & H 36 TON (Approx.) OBI PRESS; S/N N/A: Air Clutch
L & J NO. 1 OBI PRESS; S/N 936: Slide Feed; Air Actuated Mechanical Clutch

BENCHMASTER OBI PRESS:
PRESS ACCESSORIES

5 - COOPER-WEYMOUTH PETERSON 2,500 LB. MODEL C2512 STOCK CRADLES; S/N's 18966 18477 18252 18078 & 17500: 50" O.D. Capacity
JACO MODEL JCCN-301S STOCK COIL CRADLE; S/N 5825295:
DURANT 15" MODEL MD-15 STOCK STRAIGHTENER; S/N 1059:

4 - ROWE 10" MODEL A-10 STOCK STRAIGHTENERS; S/N's 4906 3015 3013 2158: .020" Minimum x .095" Maximum Capacities
ROWE 2,000 LB. MODEL 2015J-PR COIL CRADLE; S/N 14357: 40" O.D. Capacity
LITTELL 2,500 LB. MODEL 25-18 AUTOMATIC CENTERING REEL; S/N 60659-56:
4 - AIR FEEDS 12" x 12" MODEL AF-1 PNEUMATIC STOCK FEEDS; S/N's 890442 851120 831020 780118 : 13" Stock Straightener
COOPER-WEYMOUTH PETERSON 600 LB. STOCK REEL; S/N 16934:

BROACHES
MILES 10 TON MODEL MBO010-36-120R HYDRAULIC VERTICAL BROACH; S/N 861028 (New 1986): 36" Stroke; Presently Arranged With 18" Vibratory Bowl Feeder
LAPOINTE 2.5 TON TYPE HP-5 HORIZONTAL HYDRAULIC BROACH; S/N H-66076: 30" Stroke

SURFACE GRINDERS

BROWN & SHARPE 8" x 24" NO. 5 HYDRAULIC SURFACE GRINDER; S/N 523-5-716: 8" x 24" Electro-Magnetic Chuck; Motor Driven Coolant Pump & Tank
DOALL 8" x 24" HYDRAULIC SURFACE GRINDER; S/N 43587: 8" x 24" Permanent Magnetic Chuck; Motor Driven Coolant Pump & Tank
GALLMEYER & LIVINGSTON 8" x 24" NO. 35 HYDRAULIC SURFACE GRINDER; S/N S-35980: Motor Driven Coolant Pump & Tank
BOYAR-SCHULTZ 6" x 18" HYDRAULIC SURFACE GRINDER; S/N CH-1012: 6" x 18" Permanent Magnetic Chuck; Dust Collector Base
HARIG 6" x 12" MODEL 612 SURFACE GRINDER; S/N N/A: 5" x 10" Electro-Magnetic Chuck; Dust Collector
SANFORD 6" x 12" MODEL MG SURFACE GRINDER; S/N 1551172-M: 6" x 12" Permanent Magnetic Chuck; Dust Collector

CYLINDRICAL GRINDER

BROWN & SHARPE 4" x 18" NO. 5 PLAIN HYDRAULIC CYLINDRICAL GRINDER; S/N N/A: Lever Tailstock; Motor Driven Coolant Pump

JIG BORER

ATLANTIC SERIES 4000 JIG BORER; S/N 2-65: 12" x 18" T-Slotted Work Table; 17" Throat; Accu-Rite 2-Axis Digital Readout

MILLS

CINCINNATI NO. 2-24PL PLAIN HORIZONTAL PRODUCTION MILL; S/N 1B2PIL-706:
CINCINNATI NO. 2-24P PLAIN HORIZONTAL PRODUCTION MILL; S/N 1B2PIP-17:
CINCINNATI NO. 0-8 RISE & FALL HORIZONTAL PRODUCTION MILL; S/N 5F1C1Y-201:
CINCINNATI NO. 0-8-P-L PLAIN HORIZONTAL PRODUCTION MILL; S/N 5F1P1W-13:
INDEX 1.5 HP MODEL 55 VERTICAL MILL; S/N 55-8303: 9" x 40.5" T-Slotted Work Table
BROWN & SHARPE PLAIN HORIZONTAL MILL; S/N 2334:
2 - U.S. MACHINE HAND MILLS; S/N's 7298-B & 7300-B:
BECKER HAND MILL:
VERNON BENCH MILL:

SAWS

DOALL 16" MODEL ML VERTICAL BANDSAW; S/N 4510144: 24" x 24" Adjustable Work Table; Blade Speeds To 1,600 FPM; Model DBW-1 Blade Welder
KALAMAZOO HORIZONTAL BANDSAW:
SEARS 16" DIRECT DRIVE SCROLL BENCH SAW:
DEWALT MODEL 7749 RADIAL ARM SAW: 10" Blade

LATHES

MONARCH 10" x 20" MODEL EE TOOLMAKERS LATHE; S/N 28476: Spindle Speeds Variable To 2,500 RPM
ENCO MODEL FTS-27 SECOND OPERATION LATHE; S/N 701114: Lever Turret; Lever Action Cross Slide; Variable Speed Drive To 3,500 RPM; Collet Closure; Coolant Pump
WADE NO. 94 SECOND OPERATION LATHE; S/N 94-1431: Lever Turret; Lever Closs Slide

SPINNERS & RIVETERS

BODNER-KUSNACHT BENCH RADIAL SPINNER: Pneumatic Vise
MILFORD MODEL 63 BENCH RIVETER; S/N 2119:
7 - STIMPSON BENCH RIVETERS:
2 - STIMPSON NO. 10 RIVETERS:
GRANT NO. 203 RIVETER:

DRILLS & TAPPERS

CLAUSING 4-SPINDLE DRILL: Consisting of - Series 16VC-1 Drill Head S/N 610207; Model 1666 Drill Head S/N 526914; Series 22V-1 Drill Head S/N 503735; Series 22V Drill Head S/N 503736; Mounted On Production Work Table
WALKER-TURNER 14" 6-SPINDLE DRILL; S/N 1-147: Mounted On Production Work Table W/Oil Trough
LELAND-GIFFORD 20" 6-SPINDLE DRILL; S/N 1715: Production Work Table W/Oil Trough
ALLEN 24" 4-SPINDLE DRILL; S/N KH32593: Production Work Table W/Oil Trough
4-SPINDLE DRILL: Production Work Table W/Oil Trough
CUSTOM DOUBLE END MULTIPLE SPINDLE OPPOSED DRILL: Delta Vertical Drill Head
DELTA 17" 2-SPINDLE DRILL:
BUFFALO 15" NO. 15 DRILL: Proconier Size 1 Lead Screw Tapping Attachment
DELTA MODEL 17-600 DRILL; S/N 1404978: Mounted On Production Work Table; Pneumatic Feed
2 - DELTA MODEL 15-665 DRILLS; S/N's 1497155 & 1483204:
WALKER-TURNER DRILL; S/N 1398:
3 - WALKER-TURNER BENCH DRILLS; S/N's 356 1-147 & 1-194:
WALKER-TURNER BENCH DRILL; S/N 1-944: Pneumatic Feed
DELTA DRILL: Tappamatic 30X Tapping Head
3 - STEINEL BENCH MULTIPLE SPINDLE DRILLS: 4 - Adjustable Arm Spindles
ELECTRO-MECHANICAL VERTICAL & HORIZONTAL DRILL HEAD: Mounted On Production Work Table
ELECTRO-MECHANICAL DOUBLE END OPPOSED DRILL: Mounted On Production Work Table
SPEEDYCUT MODEL ST-0 BENCH TAPPER; S/N JOV2-7068:
SNOW MODEL 1-UTB TAPPER; S/N 55572:

DRILL & TOOL GRINDERS

BLACK DIAMOND MODEL 1B BENCH DRILL GRINDER; S/N 19871: Holders
DELTA 1/2 HP DOUBLE END CARBIDE TOOL GRINDER: Adjustable Work Table
7 - DOUBLE END PEDESTAL & BENCH TOOL GRINDERS:

WELDERS

TAYLOR-WINFIELD 75 KVA TYPE ENC-12-75 AIR OPERATED SPOT WELDER; S/N 66801: 3-Head Set-Up
TAYLOR-WINFIELD 75 KVA TYPE ENC-12-75 AIR OPERATED SPOT WELDER; S/N 69503: 2-Head Set-Up
NEWCOR ROTARY SPOT WELDER: Consisting of - 2 - Spotweld Stations; 8-Station Automatic Indexing Rotary Table; Mounted On Common Production Work Base
SCIAKY 50 KVA TYPE EPO.1-10-50-12 SPOT WELDER; S/N 9984: 24" Throat
2 - LORS 16" & 22" THROAT SPOT WELDERS: 2-Head Set-Ups
EISLER, 20 KVA SPOT WELDER; S/N 19234: 16" Throat
AMES 16" THROAT SPOT WELDER:

INSPECTION

SCHERR-TUMICO 14" VERTICAL OPTICAL COMPARATOR; S/N 4672: 10X Lens
WILSON MODEL 3-JS ROCKWELL HARDNESS TESTER; TESTER NO. 2609:
WILSON MODEL 1-OUR ROCKWELL HARDNESS TESTER; TESTER NO. 29:
WILSON MODEL 2KL ROCKWELL HARDNESS TESTER; TESTER NO. 2G-129KL:
FINISHING SYSTEM

FINISHING SYSTEM: Consisting of - MBC Industries 22" x 72" Opening; 5-Stage Parts Washer; MBC Industries 450 Degree F. Pass-Through Bake-Off & Gas Fired Dry Oven; Ransburg Electro-Static Model RD 3000 Turbo Disk (9" & 6") Paint Sprayer Adjustable Stroke to 60" Model 250AA Power Supply W/Spray Booth; Touch-Up Spray Booth; Assorted Paint Pressure Pots W/Regulators; Approx. 720' Closed Channel Conveyor 6" Increments Between Hooks W/Adjustable Centers; Portable Carts W/Racks

DIE STORAGE SYSTEM

VIDMAR DIE STORAGE SYSTEM: Consisting of - 2 - 11-Section 36" Wide x 30" Deep x (Approx.) 15' High Adjustable Storage Sections; 2,000 Lb. Electric Swiveling Die Lift; Dimensions Approx. 110" Wide x 40" Deep; 62" x 144" Die Work Table W/2 - CM 1 Ton Electric Hoists W/Built-In Electric I-Beam Travel

FLOOR WALKERS

6,000 LB. (Approx.) ELECTRIC HIGH-STACKING FLOOR WALKER: Scissors Reach
CLARK 4,000 LB. MODEL HWP40C ELECTRIC POWER-WORKER FLOOR WALKER; S/N HWP465-261-3521FA:
2 - EXIDE 6-CELL MODEL MPC-6-1-600 BATTERY CHARGERS; S/N's 10249-8-ZL & 10249-13-ZL:

AIR COMPRESSORS & DRYER

WORTHINGTON 50 HP 3-STAGE SKID MOUNTED AIR COMPRESSOR:
2 - WORTHINGTON 30 HP 3-STAGE SKID MOUNTED AIR COMPRESSORS:
PNEUMATECH MODEL AD-500 COMPRESSED AIR DRYER; S/N 8001-T03355-12155: 500 SCFM Capacity
VERTICAL RECEIVING TANKS:

VEHICLE

1989 FORD MODEL F800 DIESEL STAKE BOX BODY TRUCK; VIN 1FDXKB4XKVA28089: 5-Speed Manual Transmission; Approx. 62,000 Miles; 22' Box Body Truck; Dual Tire Rear Axle

MISCELLANEOUS MACHINERY

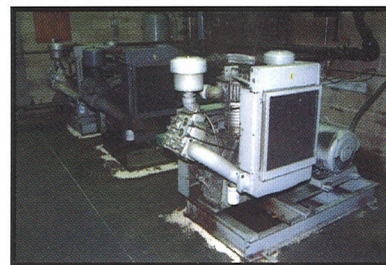
ROTO-FINISH MODEL ST-40-M VIBRATORY FINISHING MILL; S/N 71528: Approx. 96" Diameter Of Bowl; Timer Controls
ZERO MODEL BNP-65-1 SAND BLAST; S/N 2112-00: Collector
ZERO MODEL BNP-55-2 SAND BLAST; S/N 32377: Collector
CHEMCUT 21" SYSTEM 547 ETCHING LINE: Consisting of - Main Etch Chamber; 2 - Rinse Chambers; Conveyor Throughout Unit; System S/N 065-2976
INFRA-AIR 24" CONVEYORIZED DRYER:
CRESS 25 AMP MODEL C-1228 ELECTRIC FURNACE; S/N 7806:
PEXTO 18 GAUGE x 36" MODEL 137 FOOT SHEAR:
2 - BARRON-BLAKESLEE MODEL HL-600 VAPOR DEGREASERS; S/N's D58079 & D28089: Baskets
CUSTOM MADE 32" WIDE 2-HEAD NOTCHING PRESS: 2 - Motorized Uncoilers
SEMI-AUTOMATIC SILK SCREEN MACHINE:
NUARC MODEL SST2024C-39GU HORIZONTAL CAMERA; S/N 181M83-003:
DIACRO 12" NO. 2 PUNCH: Assorted Punches
OLIVER DIE FILER:
ALL AMERICAN BENCH DIE FILER:
PRODUCTO RADIAL ARM TAPPER:
PORTER-CABLE 4" TYPE C4 BELT GRINDER:
5 - 6" BELT SANDERS:
DAYTON 1" BELT SANDER/GRINDER:
2 - DAYTON 1" BENCH BELT SANDERS:

TRUCK



1989 FORD F-800 TRUCK

PLANT EQUIPMENT



3 AIR COMPRESSORS



AIR DRYER



TOWERS



WRAPPER



SCALE



LIFTS



HOPPER

PLANT EQUIPMENT

APPROX. 1,700' OF 100 AMP & 80 AMP GENERAL ELECTRIC ALUMINUM BUSS DUCT:
CIRCULAR I-BEAM HOIST UNIT: 2 - Dayton 1 Ton Electric Hoists
WATER COOLING & TREATMENT SYSTEM: Consisting of - 2 - Application Engineering 50 Ton Cooling Towers W/Stand; Cooling Tower Reservoir W/2 - 25 HP Pump W/Tank Filter Meter Etc.
FAIRBANKS-MORSE PIT SCALE: General Digital Readouts
IPM 48" x 48" TURNTABLE SKID WRAPPER: 72" Vertical Height
LARGE ASSORTMENT OF PRESS ACCESSORIES
MACHINE TOOLING & ACCESSORIES
PLANT EQUIPMENT Consisting of - Conveyors Die Work Tables Work Benches Cabinets
PERISHABLE TOOLING Including - Milling Cutters Drills Taps Reamers
PEDESTAL & WALL MOUNTED FANS • ASSEMBLY BENCHES
ELECTRICAL EQUIPMENT Including - Motors Electrical Boxes Wiring Cable Die Lifts
SAFETY LADDERS • ASSORTED WELDERS • PALLET JACKS • MAINTENANCE EQUIPMENT & SUPPLIES • HAND TRUCKS • ASSORTED SHELVING & RACKS • INSPECTION EQUIPMENT • TIME CLOCKS • FACTORY FURNITURE • ETC.
2 - WRIGHT 2 CU. YD. SELF-DUMPING HOPPERS; S/N's 4635 & N/A:
WEBER MODEL 81 LABEL PRINTER:
WEBER MODEL 420 LABEL REWINDER:
OFFICE
SCHWAB WRIGHT LINE DATA BANK SAFE:
MOSLER 2-DOOR COMBINATION SAFE:
SCHWAB 2-DOOR COMBINATION SAFE:
LARGE ASSORTMENT OF OFFICE FURNITURE: Consisting of - Executive Office Suites • Conference Room • Desk • Credenzas • Lateral File Cabinets • 4-Drawer Letter Size File Cabinets • Blueprint Files • Etc.



STEPHEN L. Winternitz, inc
Industrial Auctioneers • Appraisers

235 ANTHONY TRAIL
NORTHBROOK, IL 60062
Phone (708) 272-0440 • Fax (708) 272-0604
Branch Office In Dallas, Texas

Since 1894 Four Generations of Service to Industry

Celebrating our 100th Year!



ASSOCIATION OF MACHINERY AND EQUIPMENT APPRAISERS
Appraisers On Staff
MDNA
MACHINERY DEALERS NATIONAL ASSOCIATION

SALE HELD IN CONJUNCTION WITH

KEMPLER INDUSTRIES

VIDMAR DIE STORAGE SYSTEM

Consisting of - 2 - 11-Section
36" Wide x 30" Deep x
(Approx.) 15' High Adjustable
Storage Sections; 2,000 Lb.
Electric Swiveling Die Lift;
Dimensions Approx. 110"
Wide x 40' Deep; 62" x 144"
Die Work Table W/2 - CM 1
Ton Electric Hoists W/Built-In
Electric I-Beam Travel



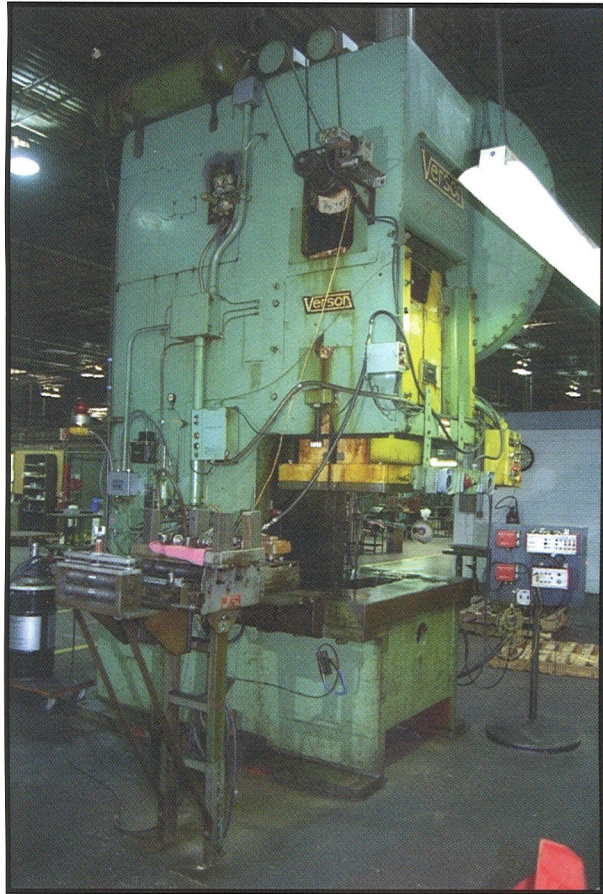
WORK TABLE W/ HOISTS



2,000 LB. ELECTRIC SWIVELING DIE LIFT



2 - 11 SECTION ROWS STORAGE RACKS



VERSON 200 TON GAP FRAME PRESS

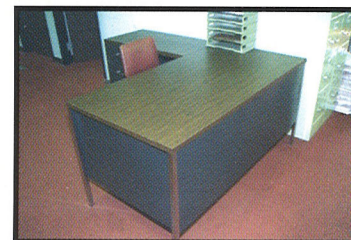
OFFICE FURNITURE



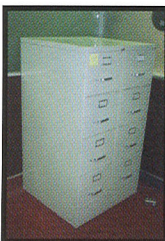
EXECUTIVE OFFICES



DESK



DESK



FILES



FILES



FILES



FILES



CONFERENCE



SAFE



STEPHEN L. Winternitz, inc

Industrial Auctioneers • Appraisers

235 ANTHONY TRAIL
NORTHBROOK, IL 60062

Phone (708) 272-0440 • Fax (708) 272-0604
Branch Office In Dallas, Texas

Since
1894

Four Generations of Service to Industry

★ Celebrating our 100th Year! ★

Sale held in
conjunction with

**KEMPLER
INDUSTRIES**

